

ICP-OES/ICP-MS SUPPLIES & ACCESSORIES

Issue 9

Product List for Agilent ICP-MS: 7700/8800



GLASS EXPANSION
Quality By Design

INTERNATIONAL

15 Batman Street
West Melbourne
Vic 3003, Australia

Telephone: +61 3 9320 1111
Facsimile: +61 3 9320 1112
Email: enquiries@geicp.com

AMERICAS

4 Barlows Landing Road, Unit 2A
Pocasset, MA 02559, USA

Toll Free Phone: 800 208 0097
Telephone: 508 563 1800
Facsimile: 508 563 1802
Email: geusa@geicp.com

Glass Nebulizers

SeaSpray

400µl/min uptake [ARG-1-USS04X](#)

MicroMist

400µl/min uptake [ARG-1-UM04X](#)

200µL/min uptake [ARG-1-UM02X](#)

100µl/min uptake [ARG-1-UM01Q](#)

50µl/min uptake [ARG-1-UM005Q](#)



Nebulizers suitable for use with HF

OpalMist

400µl/min uptake [ARG-1-PFA04X](#)

200µl/min uptake [ARG-1-PFA02X](#)

100µl/min uptake [ARG-1-PFA01Q](#)

50µl/min uptake [ARG-1-PFA005Q](#)



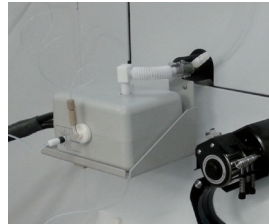
Peltier Controlled Spray Chambers

PCC Spray Chamber for Agilent 7700/8800

With glass spray chamber [KT-1116](#)

With quartz spray chamber [KT-1116Q](#)

With PFA spray chamber [KT-1116P](#)



IsoMist Programmable Temperature Spray Chamber for Agilent 7700/8800

With glass spray chamber [KT-1103](#)

With quartz spray chamber [KT-1103Q](#)

With PFA spray chamber [KT-1103P](#)

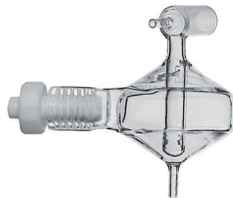


Spray Chambers

Twister with Aux. Port

50mL Cyclonic [20-809-2574HE](#)

Requires adaptor kit KT-1104.



Tracey PFA44 with Aux. Port

44mL Cyclonic [20-809-2578](#)

Suitable for use with HF.
Requires adaptor kit KT-1104.



Adaptor Kit

Adaptor Kit for 7700 [KT-1104](#)

Torches

D-Torch

[30-808-3305](#)

Comprises:

Base and Inner Tube [31-808-3196](#)

Quartz Outer Tube [31-808-3022](#)

Injector Adaptor [31-808-3072](#)

Injector Ferrule [31-808-2962](#)

Quartz Connector [31-808-3303](#)



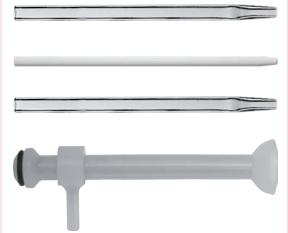
Options:

Tapered Quartz Injector 2.5mm [31-808-3302](#)

Tapered Alumina Injector 2.4mm [31-808-3205](#)

Sapphire Injector 2.4mm [31-808-3378](#)

PFA Connector with Dilution Port [31-808-3281](#)



Fixed Torch for 7700/8800

Quartz Torch, 2.5mm Injector [30-807-0556](#)

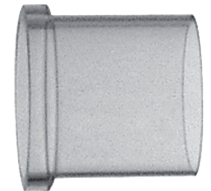
Quartz Torch, 1.5mm Injector [30-807-0557](#)

Quartz Torch, 1.0mm Injector [30-807-0558](#)



Bonnet

Quartz Torch Bonnet [31-808-2577](#)



Connectors

Quartz Connector with Dilution Port [31-808-3217](#)

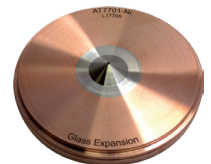
Straight Quartz Connector [31-808-3288](#)



Cones

Nickel Sampler - 7700

(Agilent p/n G3280-67040) [AT7701-Ni](#)



Nickel Skimmer - 7700x

(Agilent p/n G3280-67041) [AT7702X-Ni](#)



Nickel Skimmer - 7700s

(Agilent p/n G3280-67066) [AT7702S-Ni](#)



Cones (continued)

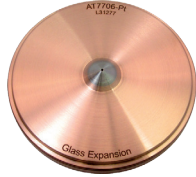
Nickel Plated Sampler - 7700

(Agilent p/n G3280-67061) [AT7701-Ni/Ni](#)



Platinum Sampler - 7700

(Agilent p/n G3280-67036) [AT7706-Pt](#)



Platinum Sampler - 7700 (18mm insert)

(Agilent p/n G3280-67056) [AT7706A-Pt](#)

Copper Skimmer - 7700s

(Agilent p/n G3280-67067) [AT7702S-Cu](#)



Platinum Skimmer - 7700x

(Agilent p/n G3280-67060) [AT7708X-Pt](#)



Platinum Skimmer with Nickel Base - 7700x

(Agilent p/n G3280-67063) [AT7708X-Pt/Ni](#)



Platinum Skimmer - 7700s

(Agilent p/n G3280-67064) [AT7708S-Pt](#)



Platinum Skimmer with Nickel Base - 7700s

(Agilent p/n G3280-67065) [AT7708S-Pt/Ni](#)



Retaining Ring for Agilent 7700 Sampler Cone

(Agilent p/n G3280-20504) [AT7704](#)



Graphite Gasket for Agilent 7700 Sampler Cone (PKT 3)

(Agilent p/n G3280-67009) [AT7703](#)



ConeGuard Thread Protectors

ConeGuard, Skimmer for Agilent 7700s

[70-803-1004](#)



ConeGuard, Skimmer for Agilent 7700x

[70-803-1008](#)

